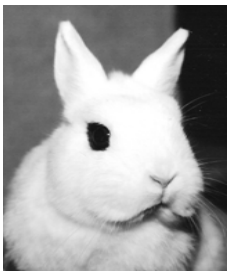


Applying the Standard

Let's apply the standard now. While checking the animal for any disqualifications, pay particular attention to the area behind the ears, tips of the ears and at the base of tail. Black spots are common in those areas. While evaluating the eyebands, look in the colored portion of the eye. Blue spots and/or marbling is another area to watch for disqualifications.

When properly posed, stand back and look at the top line. Make sure there is a gradual curve from the base of the ears to the top of the hips. Again, fault is given for any flatness, pinched, or undercut animals. One word of warning, you probably won't be able to have more than two Dwarf Hotots posed at any one time. Their nature is one of curiosity and they don't sit still for long periods of time. One look might be all you get.

After evaluating the body, go back to the head, ears and eyebands. Remember, each are allocated 15 points.



The head should be bold with good width between the eyes. Muzzle should be well filled and round in all directions. Faults should be given for long, narrow and pinched muzzles.

The ears should be well furred with good substance and slightly rounded at the tip.

The eyebands, ah yes! They should be uniformly round following the natural lines of the eye lids. A narrow, well defined band of colored fur. Color is to be as intense and dark as possible. Ideal width is the thickness of two pennies. Watch for breaks in the eyeband and areas of colored pigmentation without fur. This occurs on animals with extremely narrow eyebands.

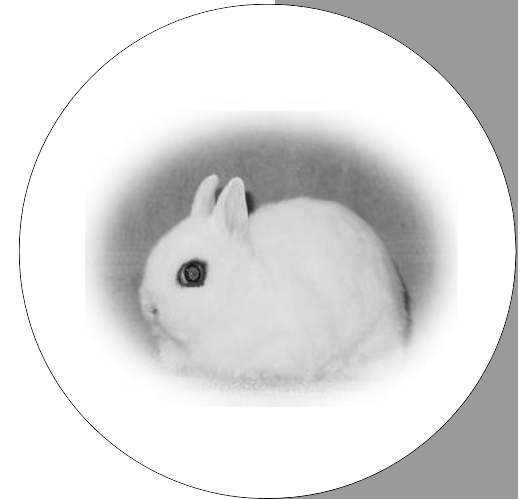
Heavy eyebands will have a tendency to have feathering. This occurs because the thicker the eyeband gets, the longer the fur is away from the eye. Fault for slightly irregular eyebands and disqualify for excessive feathering.

In summary, the Dwarf Hotot is a compact animal with uniform width from shoulders to hips. A well rounded head with well furred ears to balance with the body. It is a pure white rabbit that happens to have black eyebands.

The American Dwarf Hotot Rabbit Club

Tonna Thomas, Sec./Treas.
22267 Hwy ZZ
Marionville, MO 65705
417.463.7146
tthomas00@sbcglobal.net

www.adhrc.com



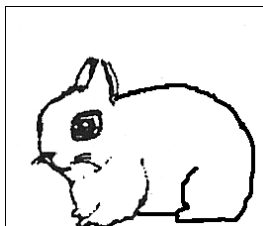
Judging the Dwarf

*"The Eyes of
the Fancy"*

**The American
Dwarf Hotot
Rabbit Club**

Posing the Dwarf Hotot

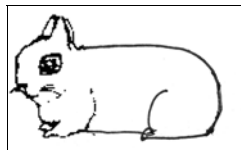
In order to properly evaluate and judge the Dwarf Hotot, it must be posed correctly. The back feet should be directly under the hindquarters and the front feet should be under the eye. The head should be carried in a natural position to the rabbit. Some rabbits hold it higher than others. Don't hold it up or push it down. It is the placing of the front and back feet that is important to correctly posing the rabbit. It should not be allowed to pose like a Britannia Petite or a Netherland Dwarf.



Properly placed hind and front feet, showing a good top line.



Posed too much on the front toes.



Flat and long in body type.



Back feet too far forward causing the rabbit to appear undercut.

When properly posed, stand back and look at the profile to see the top line. It should rise gradually from the ear base to the highest point over the hips, this unlike the top line of a Britannia Petite and a Netherland Dwarf.

Judging the Dwarf Hotot

General Type of the Dwarf Hotot

The ARBA Standard of Perfection states:

Head - Points 15: "The head should be bold with good width between the eyes. Muzzle should be well filled and round in all directions. The head should be attached with no visible neck".

The head in looking from all directions should show curvature of skull. If when looking from above, you see the muzzle, it lacks curvature. In addition, it should have good fullness in its jowls. Faults would be a long, narrow head and a weak or pointed muzzle.

Ears - Points 15: "The ears should be short, well furred, and of good substance. Ears to balance with head and body. They should be erect and well set but not necessarily touching. They should be slightly rounded at the tips".

Faults for the ears would be thin, with little fur covering. Too long to balance with the body.

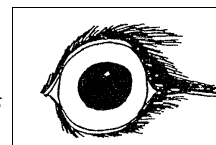
Body - Points 35: "The body should be short, compact, and well rounded. It should be uniformly wide from shoulders to the hips, with well rounded hindquarters. The top line should have a very gradual curve from the ear base to the highest point over the hips, and then fall in a smooth curve to the base of the tail".

Reading the above description, we should be looking for a well rounded body. Faults would be long neck, narrow shoulders and pinched hips. Presence of a dewlap is a disqualification.

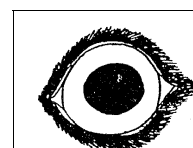
Markings - Points 15: Eyebands -

"Markings should consist of a narrow, well defined band of colored fur, forming a complete outline of the eye. Color is to be as intense and dark as possible. Ideal eyeband width is to be equal to the thickness of two pennies".

Faults for the eyebands are: slightly irregular, very wide or with drags and feathering. Eyebands that are incomplete or heavy feathering is a disqualification.



Undesirable eyeband



Desirable eyeband

Ideal width of two pennies.

Fur - Points 10: "(Rollback) Fur should be soft, dense, fine, and with a good luster. It should roll back into position when stroked".

Faults are dull, lifeless or thin coats.

